



DADACHANJI GROUP

KAISHA
Packaging

KAISHA
Lifesciences

KAISHA
Packwell

KAIRISH
Innotech

KAIRISH
Shared Services

DADACHANJI
AVIATION

SOEVAX
BIOLOGICS

SOVEREIGN

KAISHA
Lifesciences

Manufacturing Site:

Survey 342/3(77), Bharat Industrial Estate, Bhimpore,
Nani Daman (U.T.), Daman-396210, India.

☎ - 7574996300/400

Registered Address:

72-73, Free Press House, Free Press Journal Marg,
215, Nariman Point, Mumbai - 400021, Maharashtra, India.

Website: www.kaishalifesciences.com | **Email:** info@kaishalifesciences.com

Giving Life to
**Pharmaceutical
Innovation**

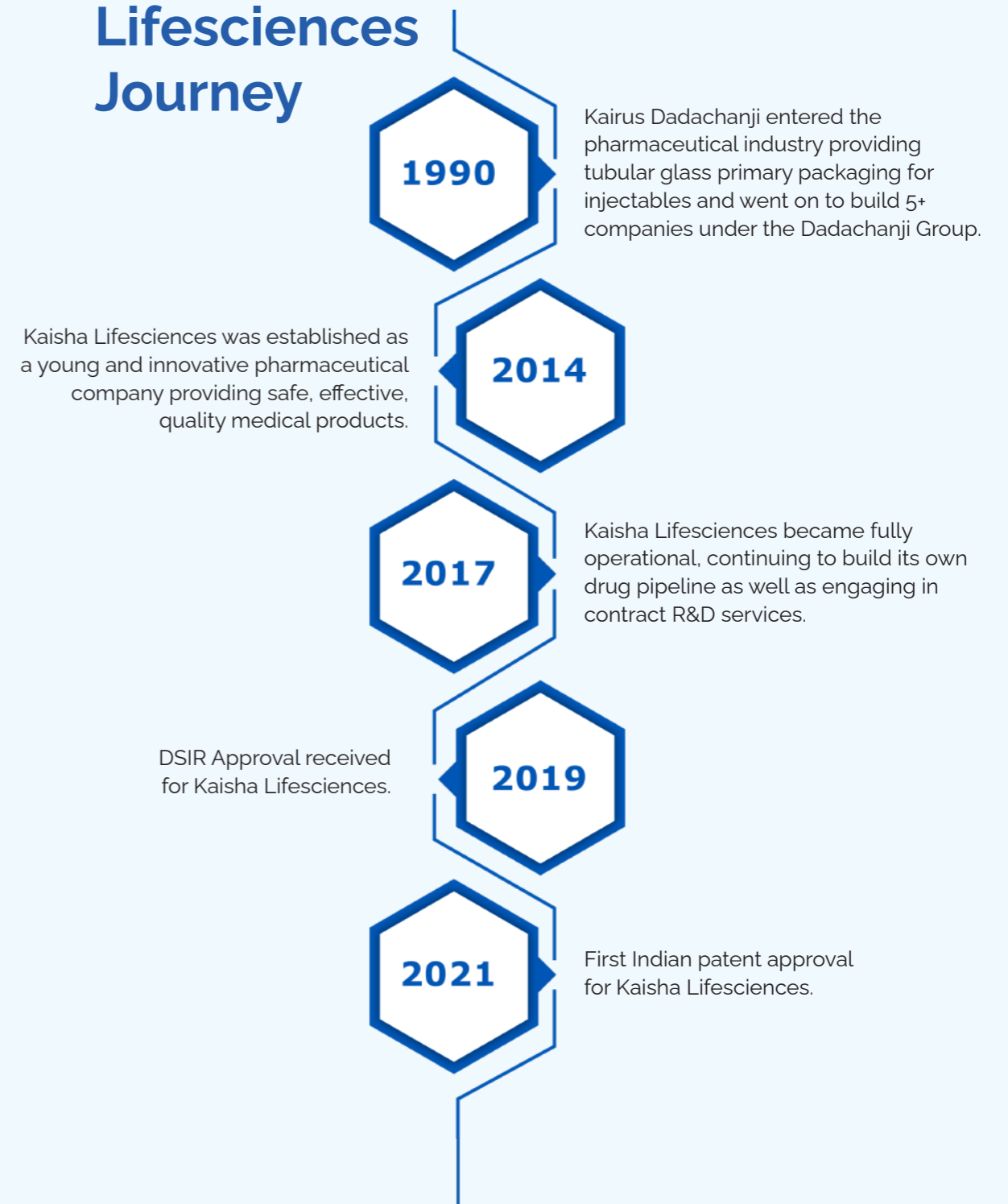
KAISHA
Lifesciences



30+ Years of Experience in the Pharmaceutical Industry

Founded by Mr. Kairus Dadachanji and headquartered in Mumbai, India, the Dadachanji Group of Companies is a diversified group with business interests that include Pharmaceuticals and Biotechnology, Primary and Secondary Packaging, Mechanical Devices, Machine Building, Automation, and Robotics.

The Kaisha Lifesciences Journey





Developing & Manufacturing the Best of Medicine

Formulation Development

- Our Formulation Development team is committed to continuous research with an aim to improve processes and optimize costs for commercial products. With a plant geared to scale up for batches, we provide quality research and customized services to pharmaceutical companies.
- Our research and development cover a wide variety of injectable drug products, including solutions for injections, lyophilized powders for injections, Prefilled Syringes, Cartridges and Topical drug products (Gel, Cream & Ointment).
- To match the future need of wide therapeutic landscape, we have a dedicated team that focusses on development of liposomal drug delivery systems, Depot injections (Microspheres & implants), suspensions for injections, oily injections and IV emulsions.



One Quality for All

As a research-oriented, privately-owned Indian pharmaceutical company engaged in developing, manufacturing, and marketing a broad range of pharmaceutical products across the globe, Kaisha Lifesciences is committed to the highest levels of quality, meeting the exemplary standards of an international pharmaceutical company.

Our philosophy of **'One Quality for All'** helps maintain the highest standards for all our products, which are developed and manufactured under the tightest controls to ensure patient safety. We pride ourselves on instilling the fundamental value of quality in all our employees, which reinforces our commitment to all customers.



Analytical Development

- A comprehensive analytical R&D facility with experienced scientists and advanced capabilities to meet the ever-rising demands of the global healthcare industry.
- Equipped with a wide range of chromatography and spectroscopic techniques (HPLC, FT-IR, UV, etc.) to meet the requirements of different types of compounds.
- 60,000 L of storage space with walk-in and reach-in stability chambers including freeze-thaw chambers, stress condition chambers, photostability chambers, and refrigerators. These chambers comply with US FDA 21 CFR with backup units.
- All methods developed are fully validated as per the current requirements laid down in the ICH guidelines Q2 (R1).

Quality Assurance and Regulatory Affairs

- Maintains cGMP systems following ICH guidelines.
- Ensures the latest updates in GMP are being translated into guidelines, standard operating procedures, and protocols.
- Ensures these guidelines are implemented to deliver quality products time after time.

Our Regulatory Affairs Department has a strong hand in offering products in Domestic, ROW, Regulated, and Semi-Regulated markets.

Our Products



Pantoprazole for injection BP

ZOFAPAN™

Route of administration: Intravenous

Composition - Each Combi Pack contains:

- | | |
|---|--|
| A) Pantoprazole for Injection
Each vial contains:
Pantoprazole Sodium IP
equivalent to Pantoprazole...40 mg | B) (For Reconstitution)
Each FFS Ampoule contains:
Sodium Chloride Injection IP
(0.9% w/v) 10 mL |
|---|--|

Esomeprazole Sodium for Injection

ZOFASOM®

Route of administration: Intravenous

Composition - Each Combi Pack contains:

- | | |
|--|---|
| A) Esomeprazole Sodium for Injection
Each vial contains:
Esomeprazole Sodium Ph. Eur.
equivalent to Esomeprazole...40 mg | B) (For Reconstitution)
Each FFS Ampoule contains:
Sodium Chloride Injection IP
(0.9% w/v) 5 mL |
|--|---|

Omeprazole for injection

ZOFAMEZ®

Route of administration: Intravenous

Composition - Each Combi Pack contains:

- | | |
|---|--|
| A) Omeprazole for Injection
Each vial contains:
Omeprazole Sodium BP
equivalent to Omeprazole...40 mg | B) (For Reconstitution)
Each FFS Ampoule contains:
Sterile Water for Injection IP 10 mL |
|---|--|

Ondansetron Injection IP 2 mg/ml (4 ml and 2 ml)

SOVESET®

Route of administration: Intravenous / Intramuscular

Composition - Each mL contains:

Ondansetron Hydrochloride IP
Equivalent to Ondansetron.....2 mg
Water For Injections IP.....q.s.



Our Products



Enoxaparin Sodium Injection I.P.

KAIVEXIN® - 20/40/60/80

Route of administration: Subcutaneous / Intravascular

Composition - Each Pre-filled Syringe Contains:

- | | |
|--|--|
| A) Enoxaparin Sodium I.P....20 mg
(Porcine Derived)
Equivalent to 2000 IU of Anti-factor
Xa Activity
Water For Injections I.P....q.s. to 0.2 mL | B) Enoxaparin Sodium I.P....40 mg
(Porcine Derived)
Equivalent to 4000 IU of Anti-factor
Xa Activity
Water For Injections I.P....q.s. to 0.4 mL |
| C) Enoxaparin Sodium I.P....60 mg
(Porcine Derived)
Equivalent to 6000 IU of Anti-factor
Xa Activity
Water For Injections I.P....q.s. to 0.6 mL | D) Enoxaparin Sodium I.P....80 mg
(Porcine Derived)
Equivalent to 8000 IU of Anti-factor
Xa Activity
Water For Injections I.P....q.s. to 0.8 mL |

Enoxaparin Sodium Injection I.P. 300mg/3ml

KAIVEXIN® - 300 (Multidose cartridge)

Route of administration: Subcutaneous

Composition - Each Multidose cartridge contains:

Enoxaparin Sodium I.P..... 300 mg/3mL
(Porcine derived)
Phenol I.P.....0.25% w/v
(As Preservative)
Water For Injections I.P..... q.s.



Rabeprazole Injection IP 20mg/vial

ZOFARAB®

Route of administration: Intravenous

Composition - Each Combi Pack contains:

- | | |
|---|---|
| A) One vial of Rabeprazole Injection IP
Each vial contains:
Rabeprazole Sodium IP...20mg | B) (For Reconstitution)
Each FFS Ampoule contains:
Sterile Water for Injection IP 5 mL |
|---|---|

